



world  
class  
winches

# Hydraulic Planetary Gear Winches

## H38P

Manual freespool clutch  
Pneumatic freespool clutch

Type No 73.06-016  
Type No 73.06-017

### 3.8 TONNES WINCH



#### Pulling force

- bottom rope layer
- top rope layer

**Metric std.**      **US std.  
(approx.)**

3.8 tonnes      8 500 Lbs  
2.4 tonnes      5 400 Lbs

#### Rope speed

- bottom rope layer
- top rope layer

12.0 m/min      39 ft/min  
19.0 m/min      62 ft/min

#### Rope speed in high auto 2-speed

- bottom rope layer
- top rope layer

n/a      n/a  
n/a      n/a

#### Max oil pressure

175 bar      2500 psi

#### Max oil flow

50 l/min      13 gal/min

#### Drum diameter

90 mm      3.54 inch

#### Rope diameter

10 mm      0.39 inch

(Acc. to DIN 14584, MBL ≥ 75 kN)

#### Rope length

30 m      98 ft

#### Numbers of layers

4      4

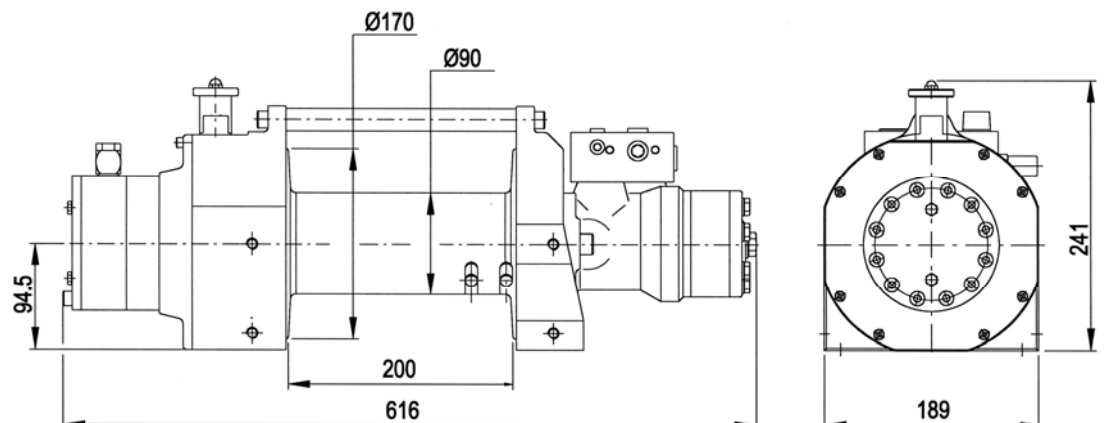
#### Winch weight

35 kg      79 Lbs

#### Rope weight

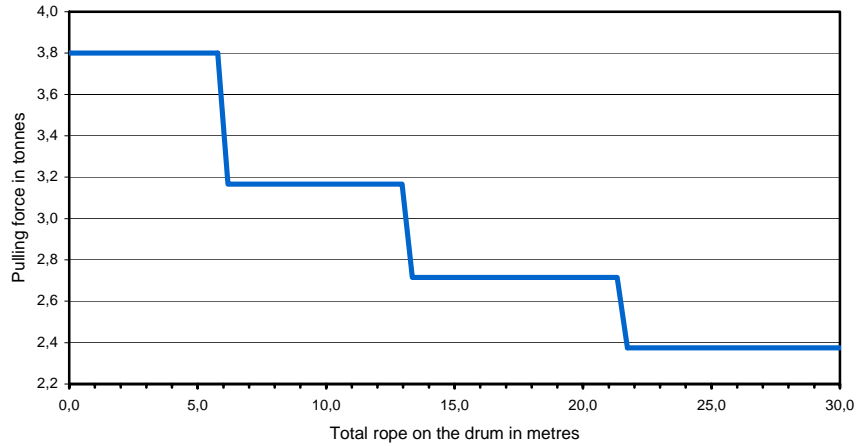
13 kg      29 Lbs

### Dimensional drawing (dimensions in mm)



### Pulling force over the rope length

	Pulling force (tonnes)	Rope speed (m/min)	Total Rope on the drum (m)
1st	3,8	12,0	6,0
2nd	3,2	14,5	13,2
3rd	2,7	17,0	21,5
4th	2,4	19,0	31,1

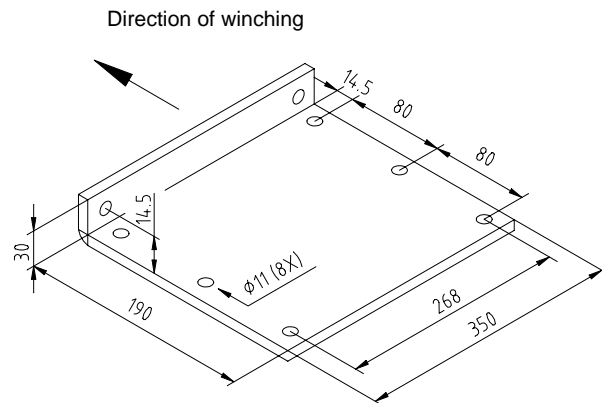


### Mounting instructions

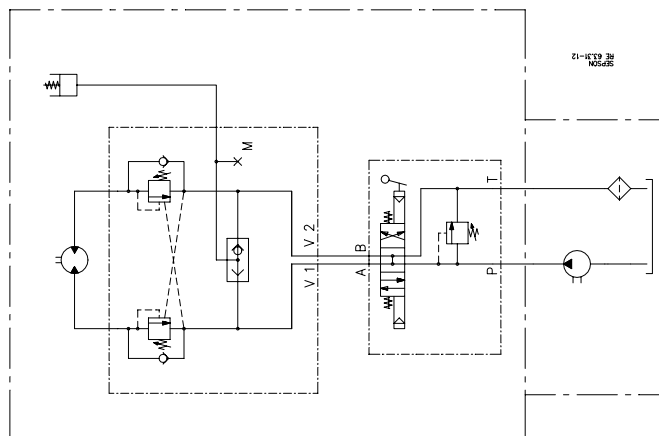
The winch should be mounted on a 10 mm steel mounting plate fixed to the vehicle.

The winch must be fitted to the mounting plate with 8 bolts M6S M10x30 (hot galvanized) minimum quality 8.8.

Tightening torque 50 Nm (5 kpm) when oiled.



### Hydraulic installation



#### Declaration of Conformity

According to the Machine Directive 98/37/EC, Annex IIA

**Sepson AB, P.O. Box 172, SE-780 50 Vansbro, Sweden** declare under our sole responsibility that:

The winch type 73.06 with serial numbers 531-1512

- are manufactured according to the Machine Directive 98/37/EC
- are manufactured according to following harmonized standards – EN 292-1 and 2

Vansbro December 9, 2005. **Sepson AB** Ulf Jons Designer